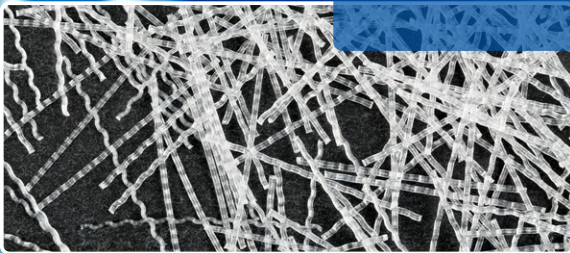


EIRICH Fiber Feeder

**Optimum separation and precise feeding of
synthetic microfibers and macrofibers**

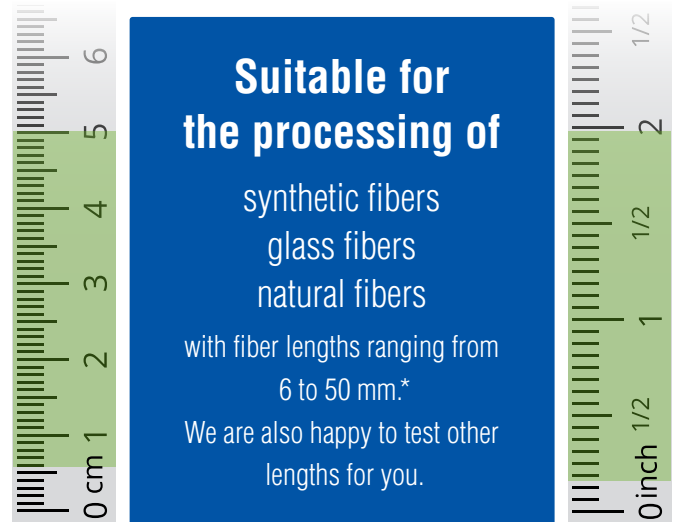


Fully automated: Simple and precise feeding of fibers.

Synthetic fibers play an important role in boosting product quality in many modern products. However, the use of fibers in the production process is highly complex, and in the past, automated feeding systems were rarely available.

In the form of the new FD series, EIRICH has now elevated fiber feeding to a new level to offer you an automated and practical solution for your process.

This new series enables accurate feeding thanks to optimized solubilization of a wide range of different fiber types.



**Suitable for
the processing of**

synthetic fibers
glass fibers
natural fibers

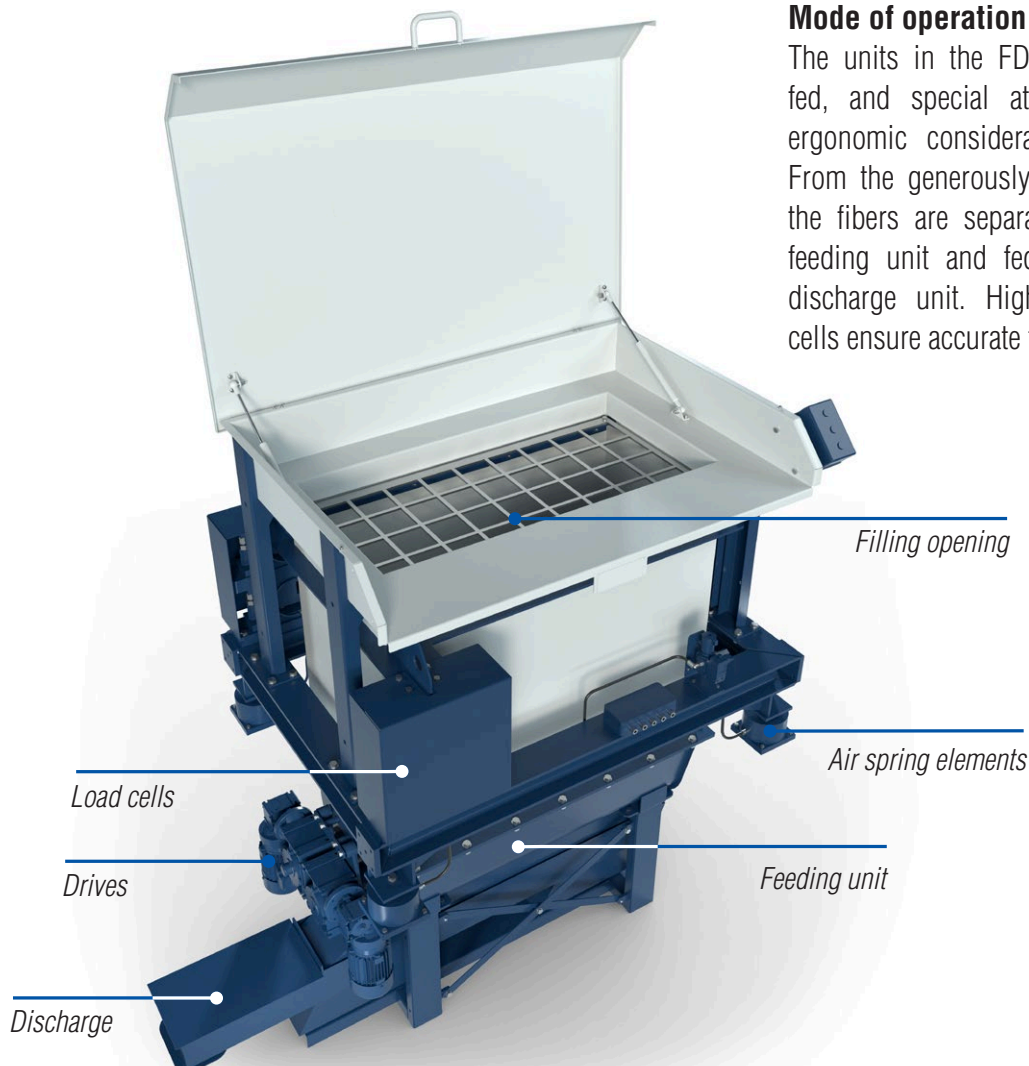
with fiber lengths ranging from
6 to 50 mm.*

We are also happy to test other
lengths for you.

*0.25 to 2 inches

Mode of operation

The units in the FD series can be individually fed, and special attention has been paid to ergonomic considerations for manual feeding. From the generously dimensioned storage tank, the fibers are separated by the special EIRICH feeding unit and fed into the process via the discharge unit. High-precision integrated load cells ensure accurate feeding.



A complete solution from EIRICH



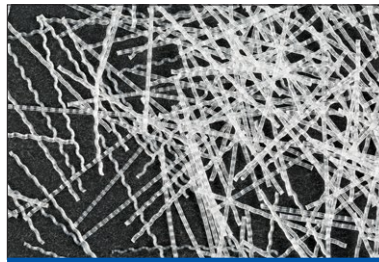
FD series



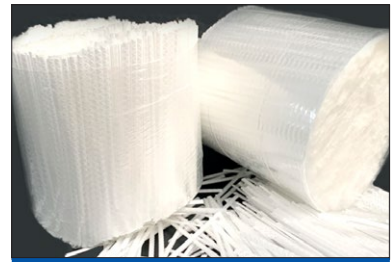
Microfibers



Macrofibers



Pucked fibers



EIRICH MIXER

Applications



Building materials



Brake and clutch linings



Batteries



Ceramic and refractory products

Advantages

■ Ease of planning

The feed can be introduced directly into the mixer or onto a conveyor, or into a tub or a balance.

■ Perfectly tailored to your fibers

The feeding and discharge units are specially optimized for the requirements of your fiber type.

■ Gentle separation process

With no damage to the fibers.

■ Advantages for you in the process

Highest feeding accuracy combined with fast fiber discharge.

■ Robust design and construction

Excellent service life and high availability.

Control system with Quick Set-Up

Seamless integration in your system/plant:

- As a standalone device with a standardized interface to your process control system
- Fully-integrated in your process control system



Praise from customers



Hermann Uhl KG
Am Kieswerk 1-3
77746 Schutterwald

“There are a number of methods for feeding fibers, but I was immediately drawn to the one used by EIRICH. Straight away, it was obvious to me that this machine was the right one for our process.”

We agreed a date at EIRICH's technical center to test the feeding system and its accuracy on-site using the fibers we will be using in the actual process.

I can wholeheartedly recommend EIRICH - we are extremely happy with how reliably the system is running. Our thanks go to the team from EIRICH.”

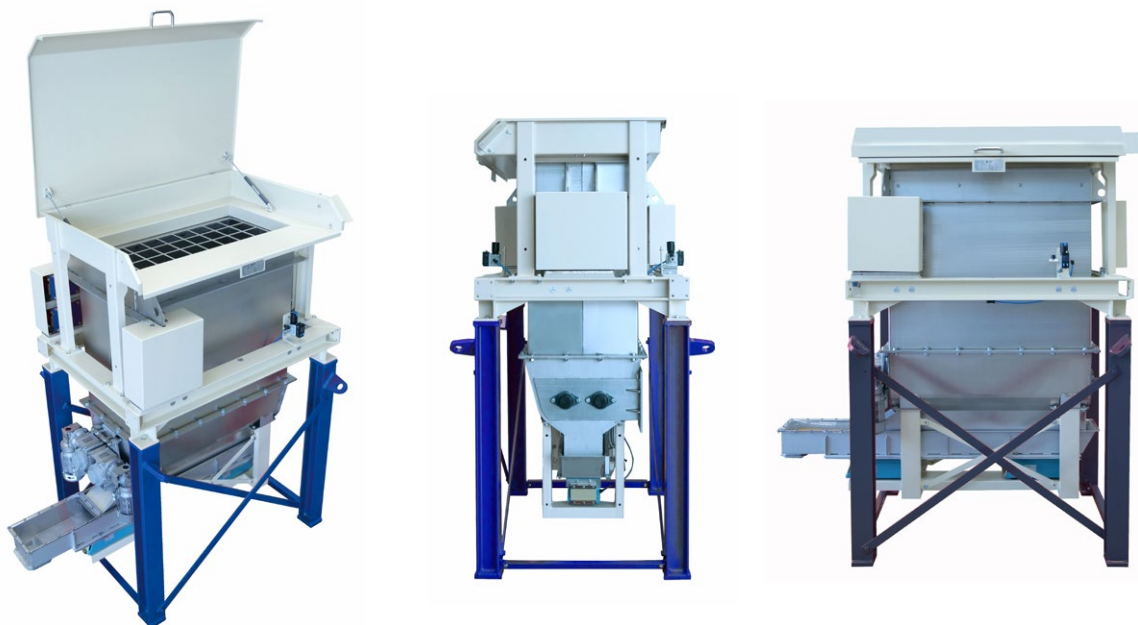
Technical data for your planning

Platform installation

Free-standing

Both units in the FD series can be integrated in the system platform or set up as a free-standing installation.

	Weighing capability (kg)	Tank volume (L)	Drives (kW)
FD series	150	500	0,75 - 2,5



**Example photos:
EIRICH Fiber feeder for synthetic fibers**